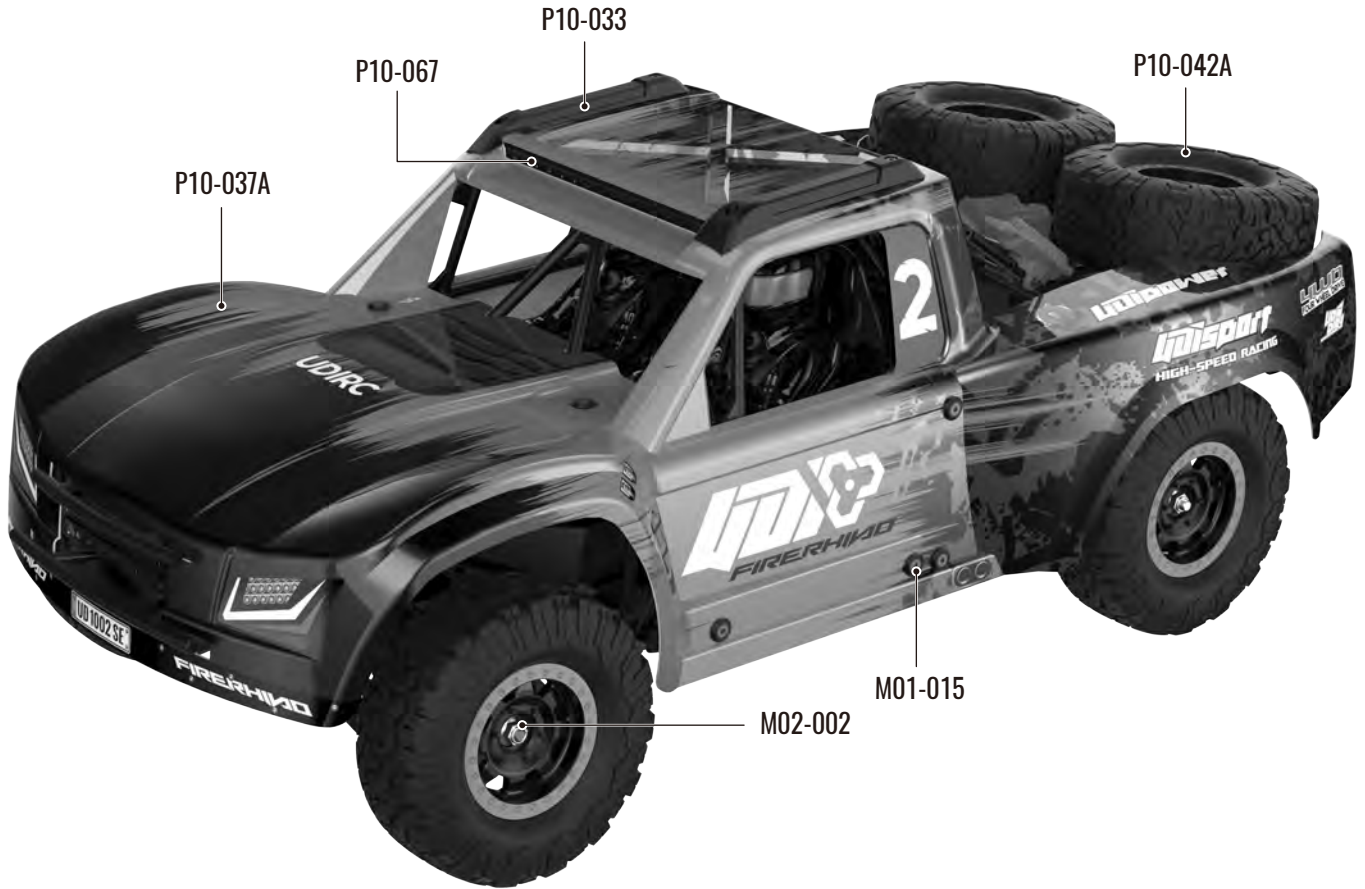
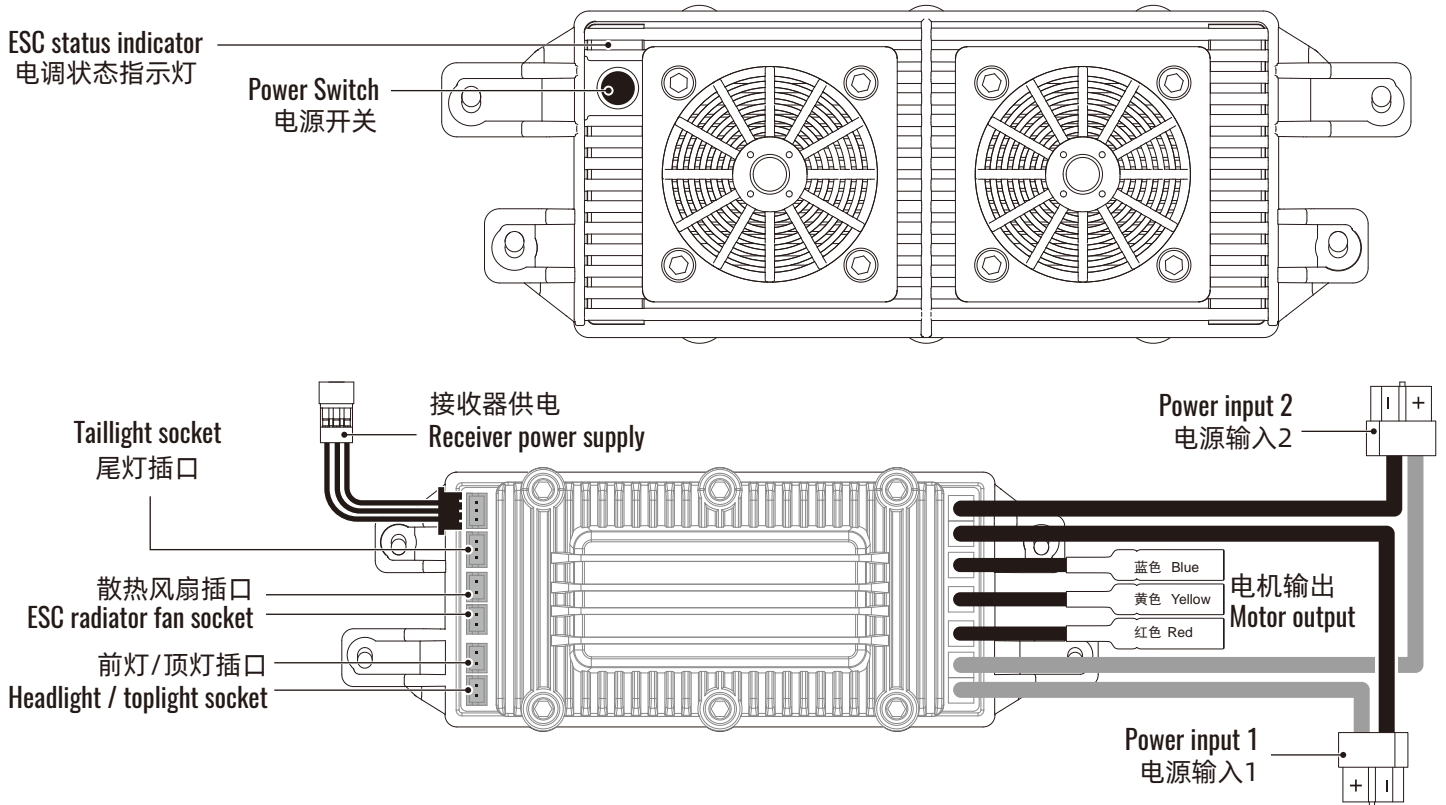


# Model Car Summary 车辆概述

**UD1002SE** Body sticker location can be used as you need.  
车身贴纸位置可按需使用



# Electronic speed controller 电子调速器



## START UP AND SET UP 开机和设置

### Turn on the power of transmitter

1. Turn on the power: Press the ON/OFF button for about 0.5 seconds, the yellow light flashes to long light.
2. Turn off the power: Press the ON/OFF button for about 3 seconds, the light will turn off.
3. Setting: After "2", press the ON/OFF button for about 3 seconds, the yellow light flashes to keep bright and the red light flashes to enter the setting state.
  - 1) Throttle trigger in the middle position, open key pressed, red light out, yellow light long light;
  - 2) Pull the trigger backward to the maximum, press the switch, the yellow light flashes 2 times;
  - 3) Pull the trigger forward to the maximum, press the switch, the yellow light flashes 3 times;
  - 4) The yellow light flashes six times, it mean the setting is complete.

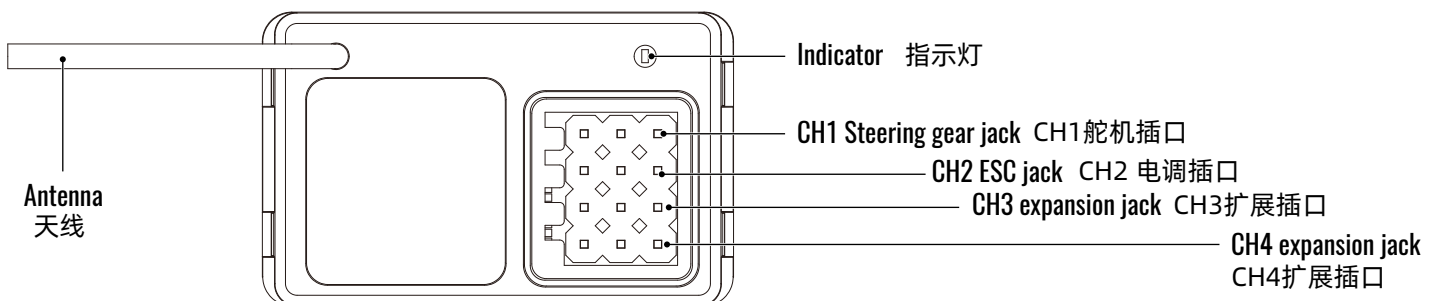
### 开启遥控器电源

1. 开机: 按开关键约0.5秒, 黄灯闪烁变长亮。
2. 关机: 按开关键约3秒, 灯灭。
3. 设置: 在“2”之后, 按开关键约3秒, 黄灯闪烁变长亮, 红灯闪烁, 进入设置状态。
  - 1) 读取油门扳机中位, 开关键按一下, 红灯灭, 黄灯长亮;
  - 2) 扳机往后拉到最大, 按一下开关键, 黄灯闪二次;
  - 3) 扳机往前拉到最大, 按一下开关键, 黄灯闪三次;
  - 4) 黄灯闪烁六次, 设置完成。

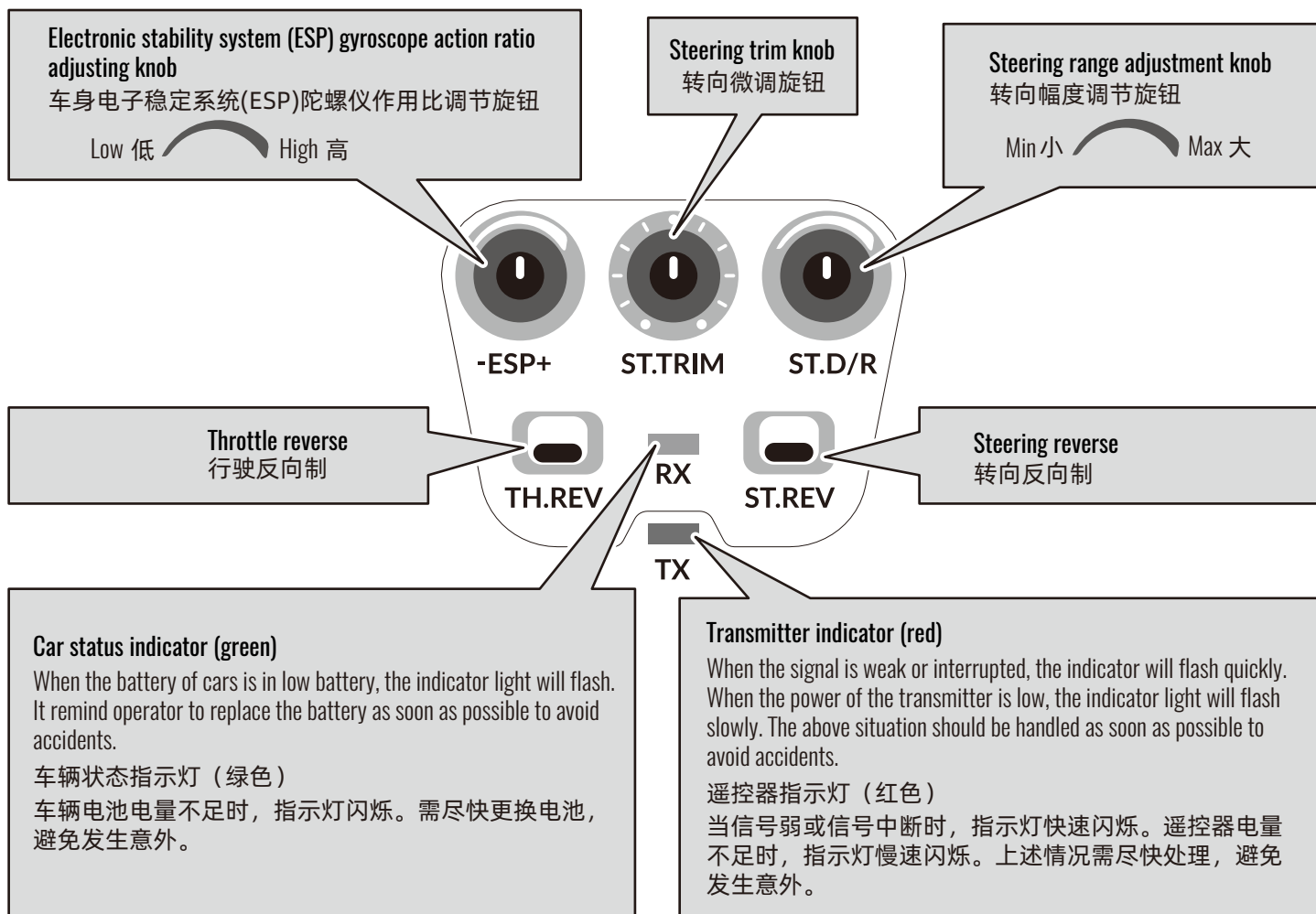
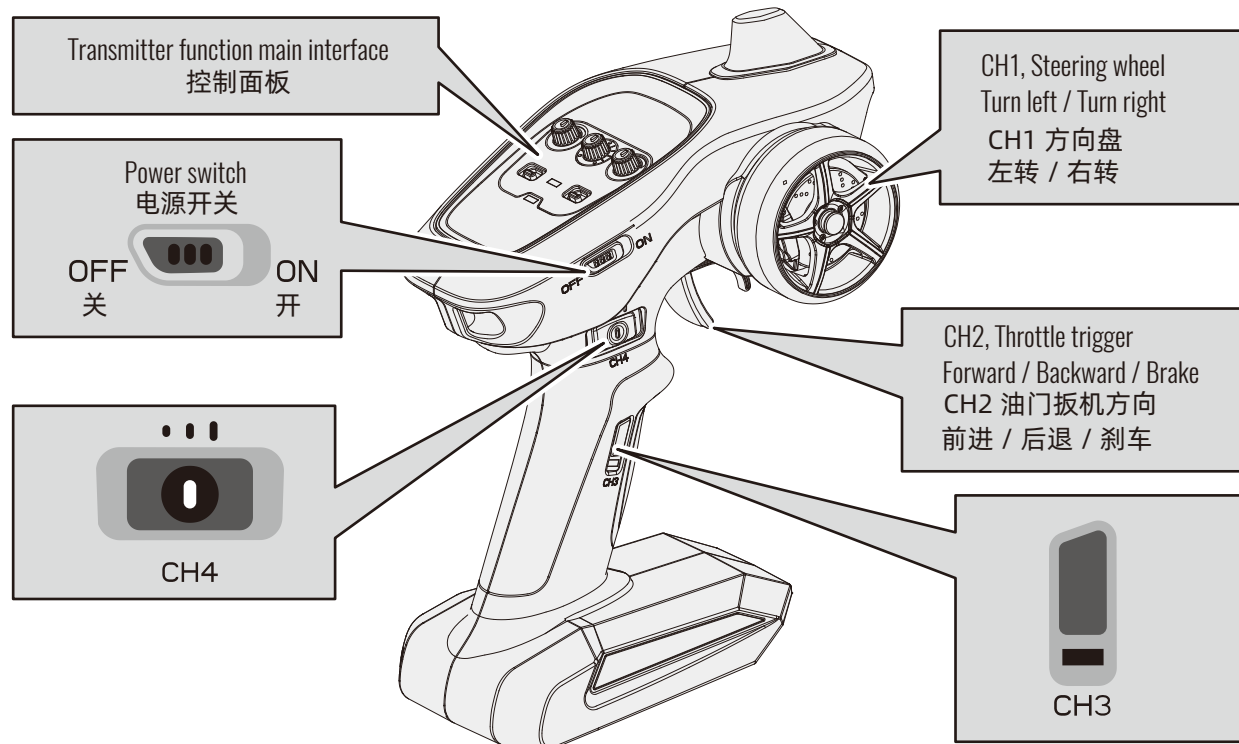
1. 兼容2S-3S (自动识别) 锂电池;
2. 正常使用电流数值: 平均电流120A, 瞬间电流300A
3. 内部设置免电池电路 (BEC) 模块, 输出值为: 5V/5A
4. 低压保护: 当电池电压 $2S \leq 6.2V$ 、 $3S \leq 9.6V$ 时, 电调停止工作。
5. 高温保护: 当电调温度达到 $95^{\circ}C$ 时直接断电 (电调停止工作), 待温度下降后, 恢复正常工作。

1. Compatible with 2s-3s lithium battery (automatic identification);
2. Normal working current value: average current 120A, instantaneous current 300A
3. The battery elimination circuit (BEC) module is set inside. Output value: 5V / VA
4. Low voltage protection: when the battery voltage  $2S \leq 6.2V$  and  $3S \leq 9.6V$ , the ESC stops working.
5. Over temperature protection: when the ESC temperature reaches  $95^{\circ}C$ , power off directly (ESC stops working), and resume normal operation after the temperature drops.

## Receiver 接收器



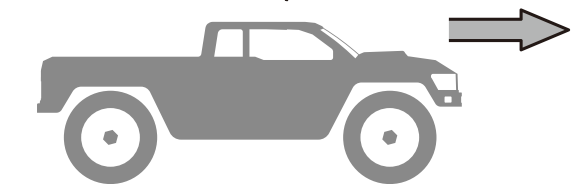
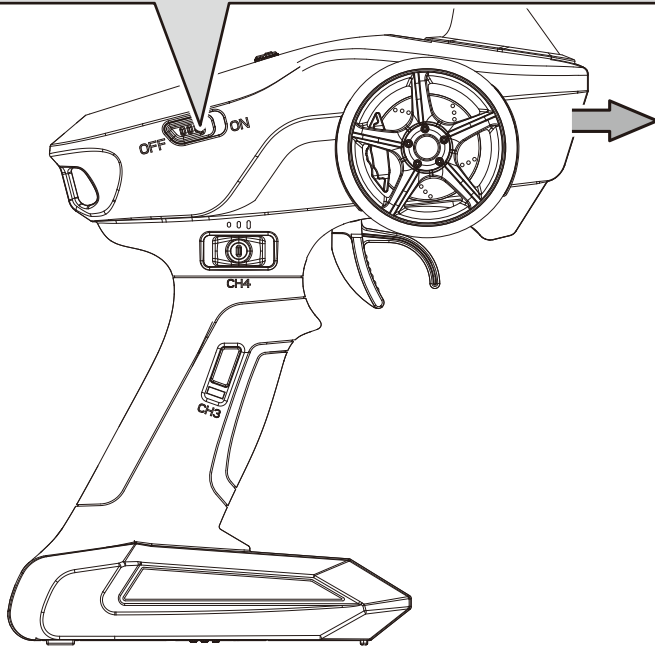
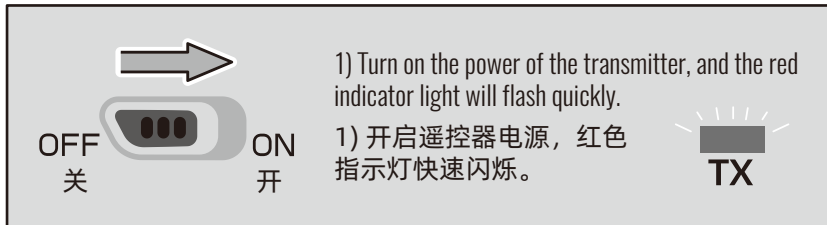
# Preparation of transmitter 遥控器概述



# Operational guidance 操作指引

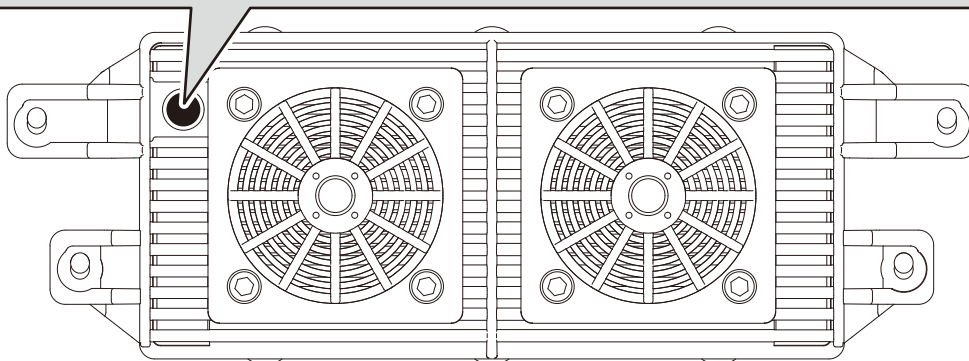
1>

## Frequency matching 对频



**Place the model on level ground**  
将车辆放置于水平地面

2) Turn off the power: Press the ON/OFF button for about 3 seconds, the light will turn off.  
2) 按下约0.5秒，开启电源，车灯闪烁变长亮。对频成功。按约3秒，关闭电源，车灯灭。



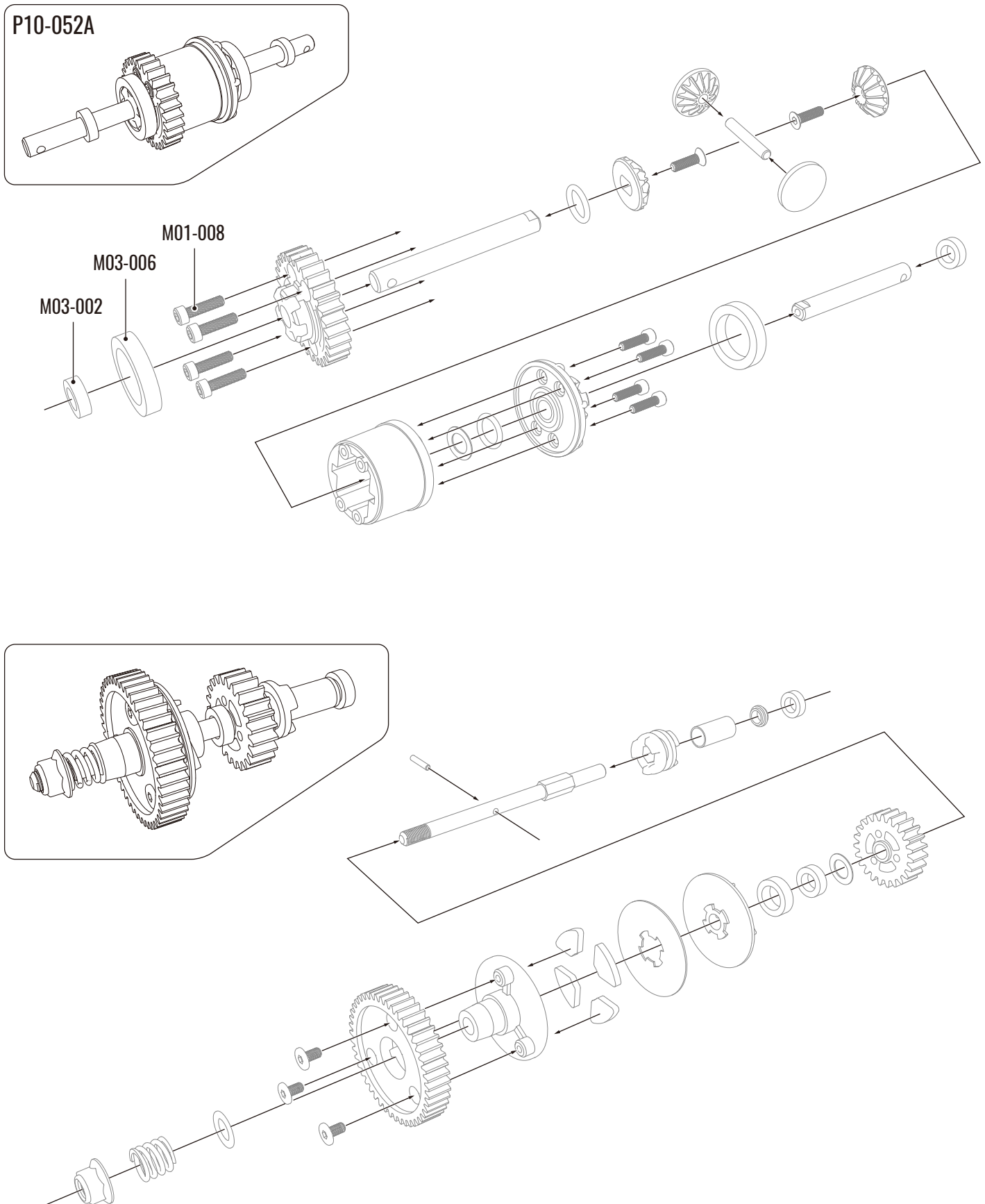
After the car power is turned on, the transmitter and the car will carry out automatic frequency matching. When the indicator light of the transmitter and the car lights are always on, the frequency matching is successful. In the process of frequency matching, the car lights will flash rapidly. At this time, the gyroscope is being calibrated automatically. Please place the car on the level ground to complete this operation. After calibration, the car lights return to normal.

开启车辆电源后，遥控器和车辆会自动对频，当遥控器指示灯和车灯常亮时，则对频成功。在对频过程中车灯会快速闪烁，此时陀螺仪正在进行自动校准，请务必将车辆放置于水平地面完成此操作。校准完毕后车灯恢复正常状态。

# Parts exploded view 零配件组装示意图

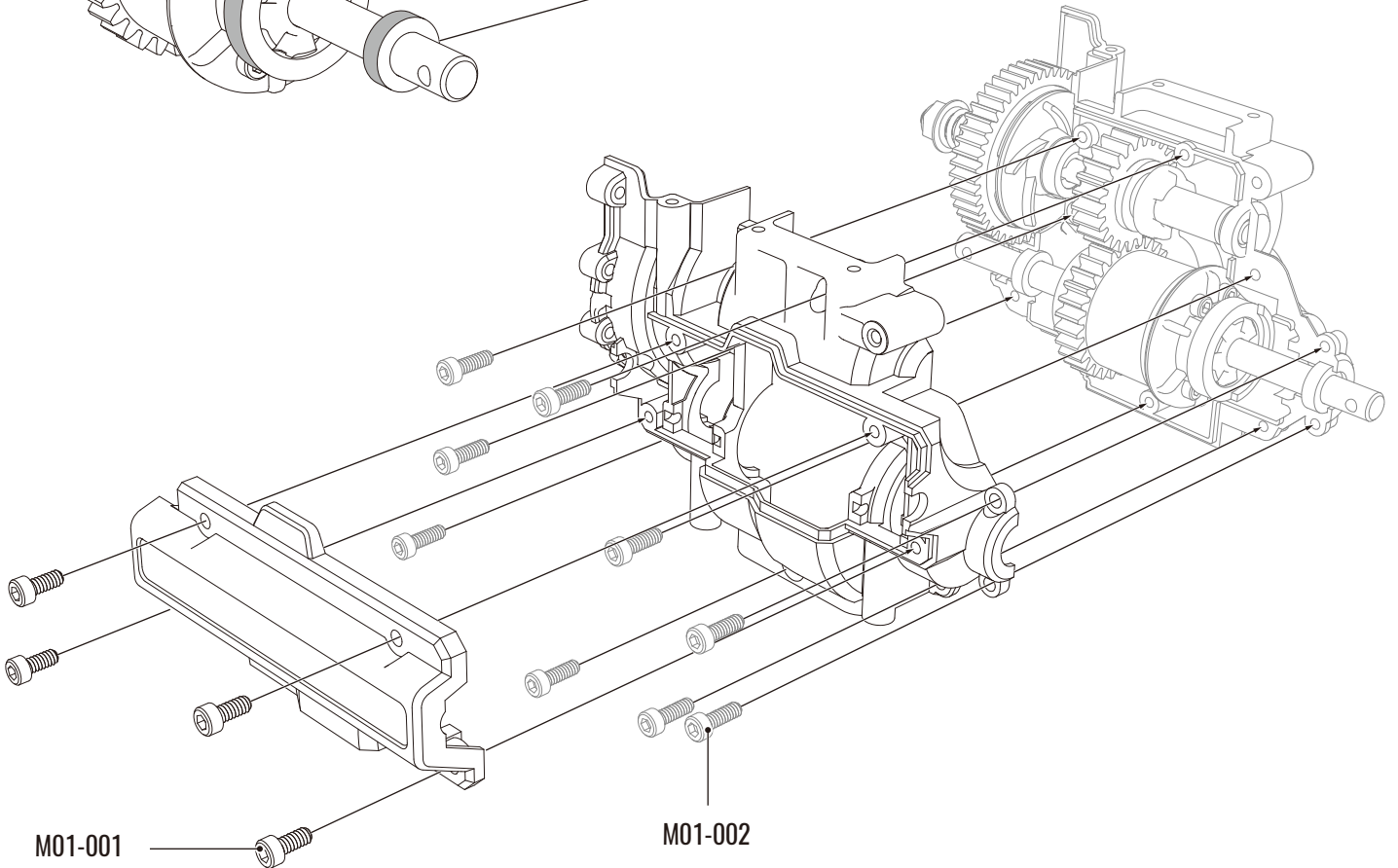
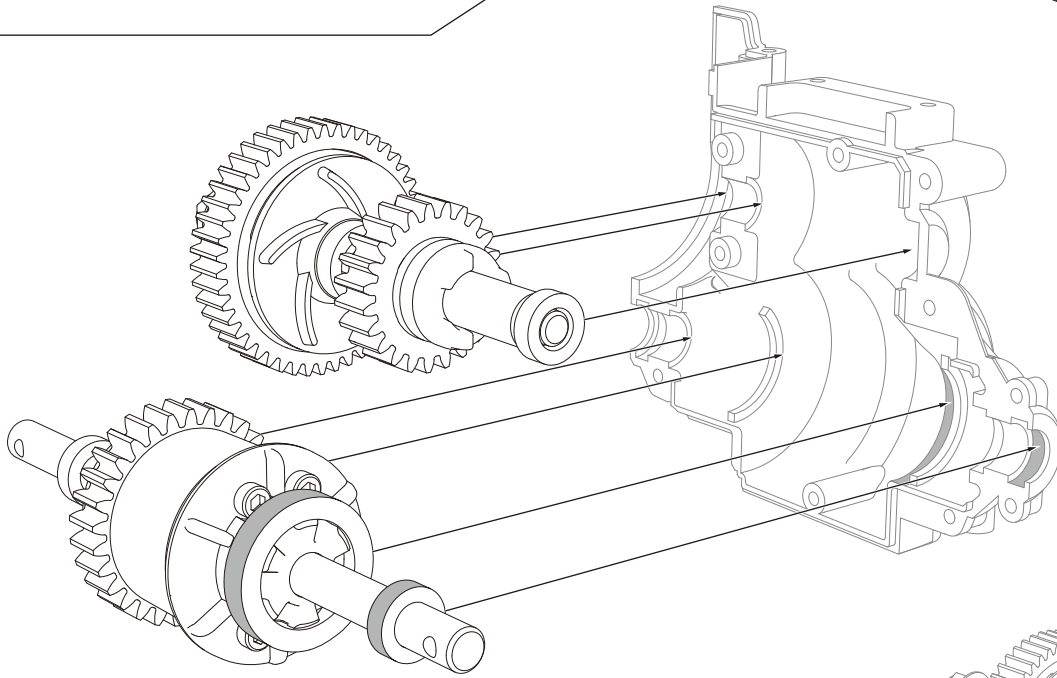
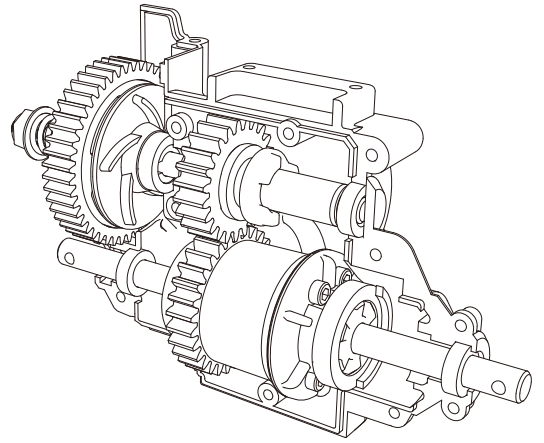
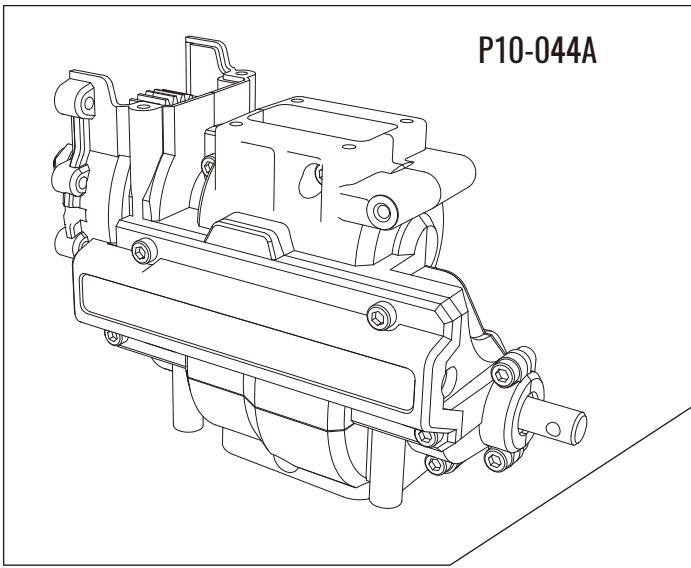
Accessories vary by model, the products obtained from sales shall prevail. 各零配件以销售所得为准

## Assembly of center differential 中波箱





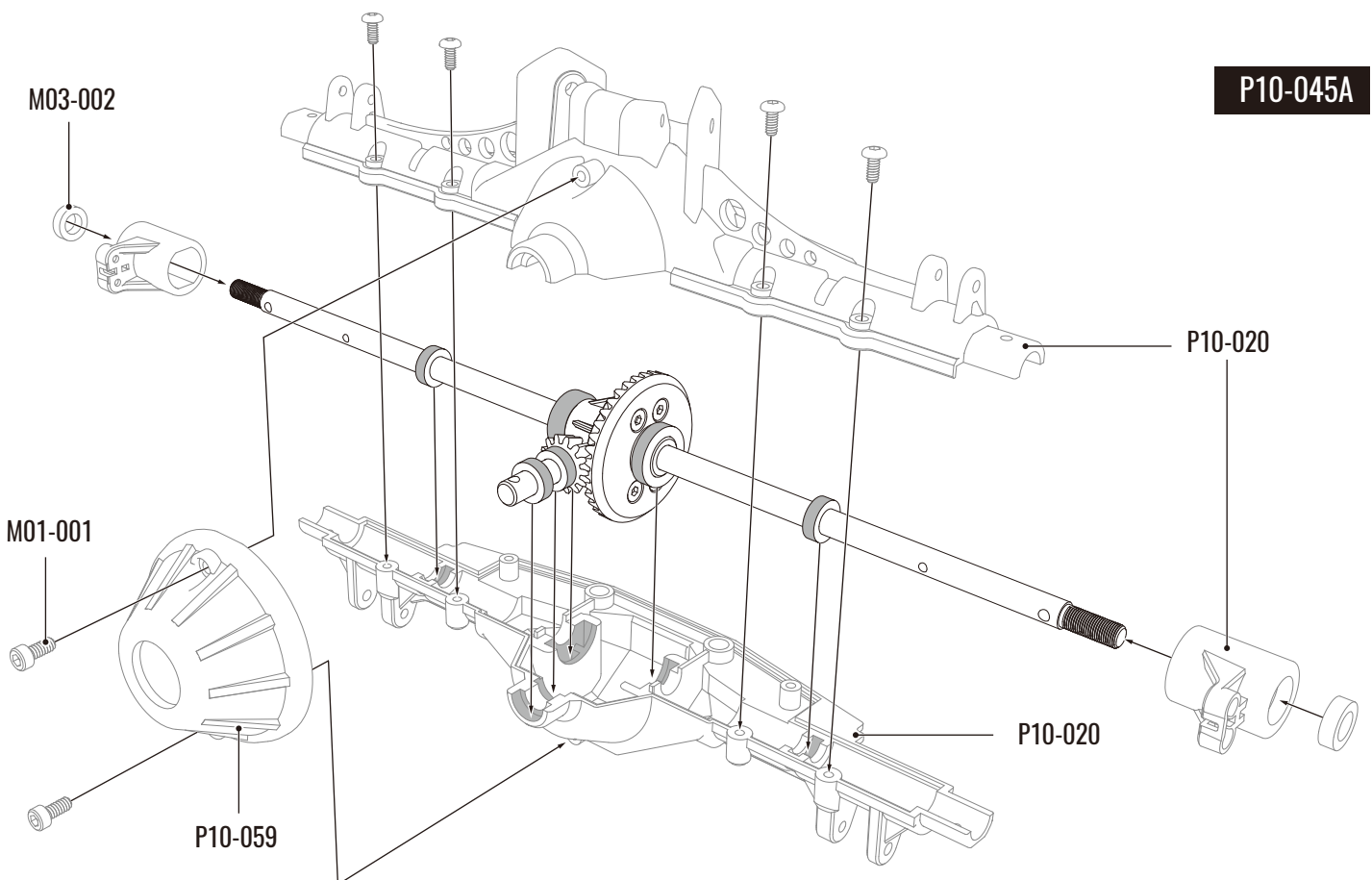
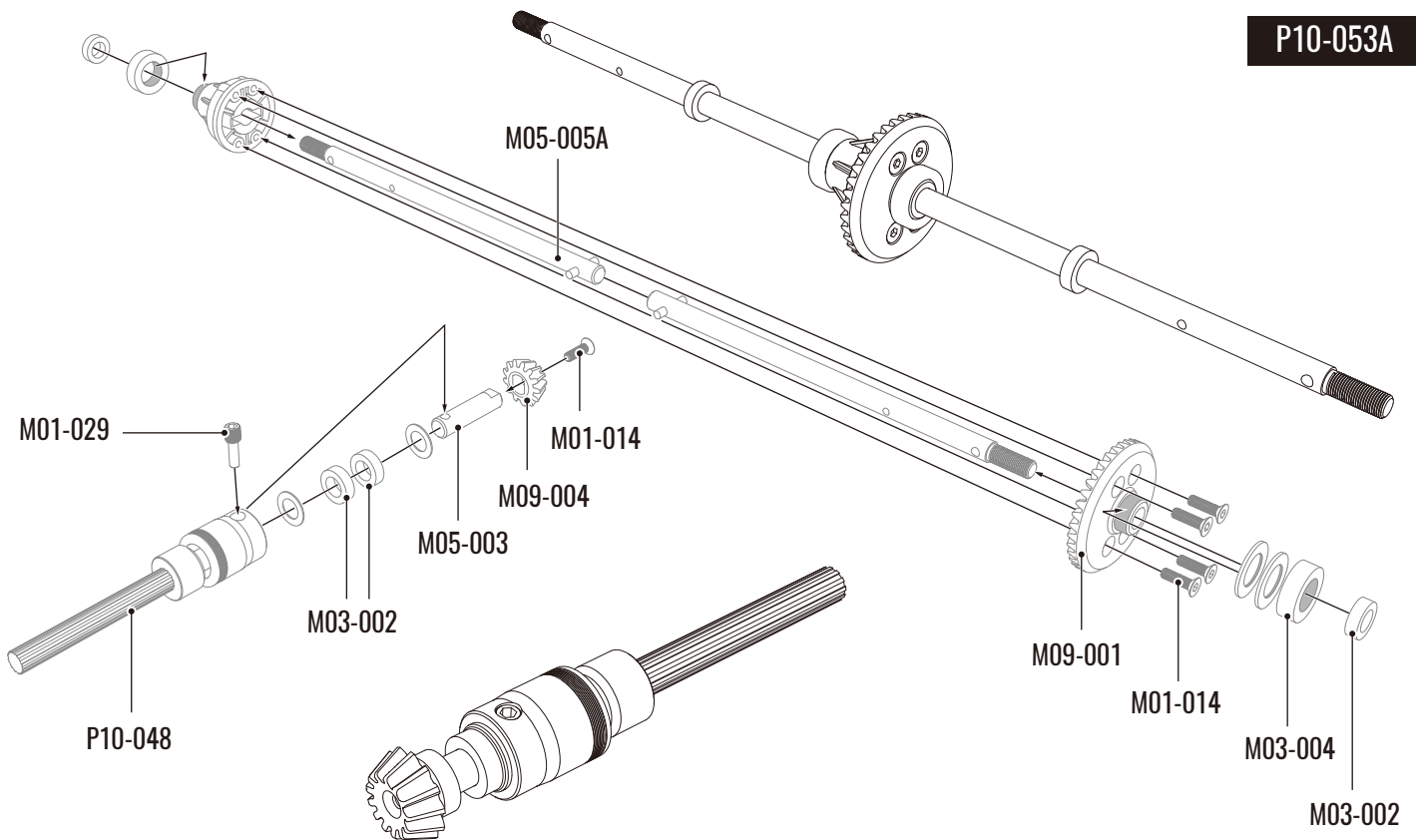
P10-044A



M01-001

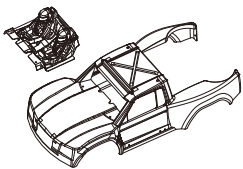
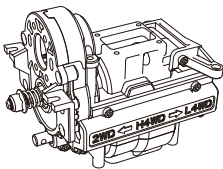
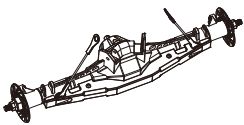
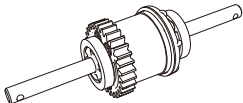
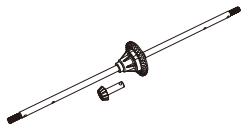
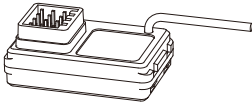


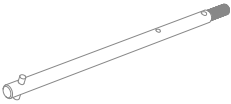
M01-002

# Installation of rear differential 后波箱



# Buyable accessories 可购买配件

Accessories vary by model, the products obtained from sales shall prevail. 各零配件以销售所得为准

				
<p>P10-037A Body 车壳组件</p>	<p>P10-044A Central transmission assembly 中央变速箱总成</p>	<p>P10-045A Rear axle assembly 后车桥总成</p>	<p>P10-052A Differential assembly (center) 差速器总成 (中央)</p>	<p>P10-053A Differential assembly (rear) 差速器总成 (后)</p>
				
<p>P12-046 Receiver 接收器</p>	<p>P12-028 Transmitter 遥控器</p>	<p>P10-042A Wheel 车轮总成</p>	<p>M05-005A Rear axle shaft 后车桥驱动轴</p>	